

Paper Reference 1MU0/03
Pearson Edexcel
Level1/Level 2 GCSE (9–1)

Music

Component 3: Appraising

Total Marks

Monday 17 June 2024 – Afternoon

Time: 1 hour 45 minutes

You must have:
Source Booklet (enclosed)

**In the boxes below, write your name,
centre number and candidate number.**

Surname					
Other names					
Centre Number					
Candidate Number					

YOU MUST HAVE

Source Booklet (enclosed)

YOU WILL BE GIVEN

Nil

INSTRUCTIONS

Answer ALL questions.

Answer the questions in the spaces provided or in the source booklet provided – there may be more space than you need.

Turn over

INFORMATION

The total mark for this paper is 80.

Section A has 68 marks and Section B has 12 marks.

The marks for each question are shown in brackets – use this as a guide as to how much time to spend on each question.

There are two audio files for the paper, one for Section A and one for Section B.

Turn over

ADVICE

Read each question carefully before you start to answer it.

Try to answer every question.


Check your answers if you have time at the end.

SECTION A

Answer ALL questions. Write your answers in the spaces provided.

Some questions must be answered with a cross in a box .

If you change your mind about an answer, put a line through the box .

and then mark your new answer with a cross .

**J Williams: Main title/rebel
blockade runner (from the
soundtrack to Star Wars Episode
IV: A New Hope)**

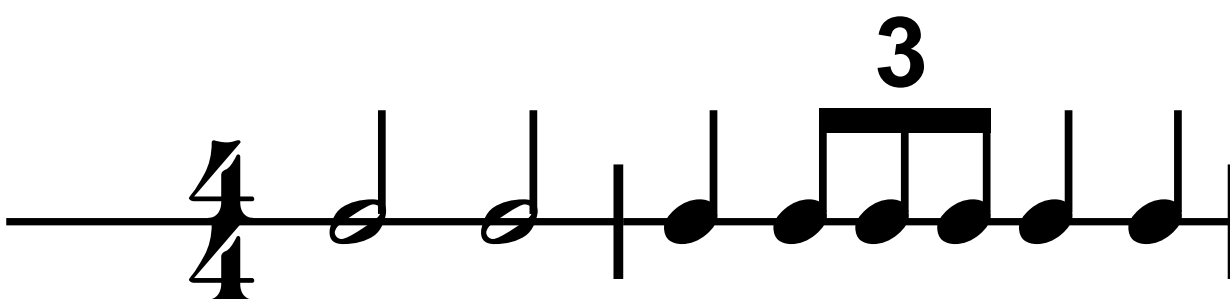
**1. Listen to the following extract which
will be played THREE times.**

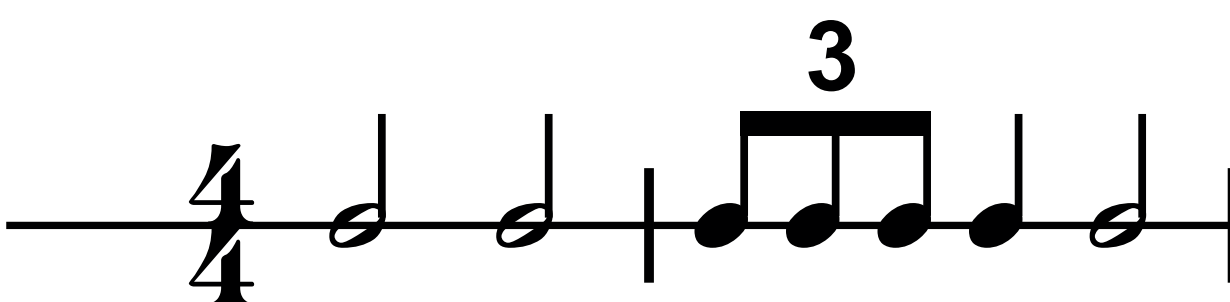
**(a) Name the instrument which
plays the melody at the START
of the extract. (1 mark)**

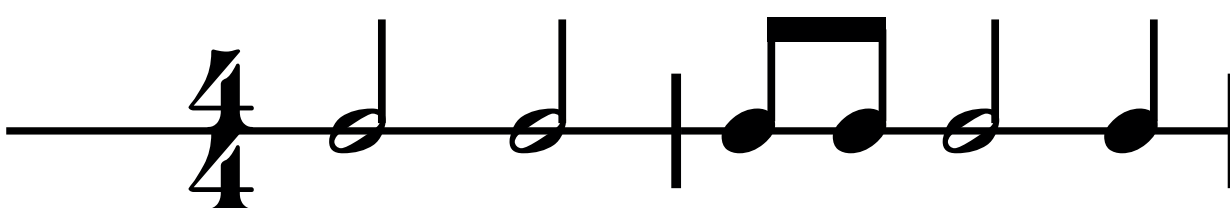
(continued on the next page)

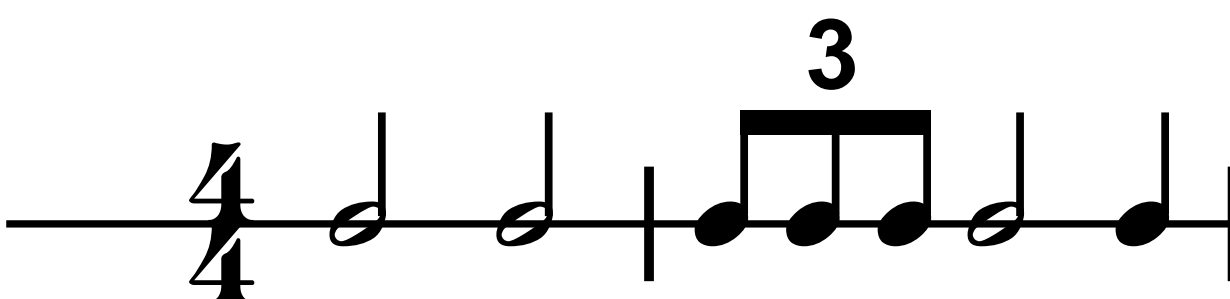
QUESTION 1 continued.

(b) Identify the rhythm of the melody heard at the **START** of the extract. Put a cross in the correct box **X**. (1 mark)

A ☐ 

B ☐ 

C ☐ 

D ☐ 

(continued on the next page)

Turn over

QUESTION 1 continued.

**(c) Name the playing technique
heard in the violins at the
START of the extract. (1 mark)**

(continued on the next page)

QUESTION 1 continued.

- (d) Explain how the composer uses harmony and texture to create a dramatic atmosphere at the START of the extract. (2 marks)**

(Answer space continues on next page)

harmony_____

Turn over

QUESTION 1 (d) continued.

texture _____

**(e) Name ONE percussion
instrument heard when the
strings play the melody. (1 mark)**

(continued on the next page)

Turn over

QUESTION 1 continued.

(f) Identify the tonality of this extract.

Put a cross in the correct box ☒. (1 mark)

A ☐ atonal

B ☐ major

**C ☐ starts minor
and ends major**

**D ☐ starts major
and ends minor**

(Total for Question 1 = 7 marks)

Turn over

H Purcell: Music for a While

2. Listen to the following extract which will be played THREE times.

(a) Identify THREE features of the harmony at the START of the extract that are characteristic of Baroque music. (3 marks)

1 _____

2 _____

3 _____

(continued on the next page)

Turn over

QUESTION 2 continued.

- (b) Complete the following table by putting a cross ☒ in the correct box to show whether each statement is true or false. (3 marks)**

STATEMENT	TRUE	FALSE
The extract modulates	<input type="checkbox"/>	<input type="checkbox"/>
The extract is in a simple time signature	<input type="checkbox"/>	<input type="checkbox"/>
The extract contains triplets	<input type="checkbox"/>	<input type="checkbox"/>

(continued on the next page)

Turn over

QUESTION 2 continued.

(c) Describe TWO features of the vocal melody that create a feeling of grief. (2 marks)

1 _____

2 _____

Total for Question 2 = 8 marks)

**J S Bach: 3rd Movement from
Brandenburg Concerto No.5
in D major**

**3. Listen to the following extract which
will be played THREE times.**

**(a) Name the FIRST instrument
heard in this extract. (1 mark)**

(continued on the next page)


QUESTION 3 continued.

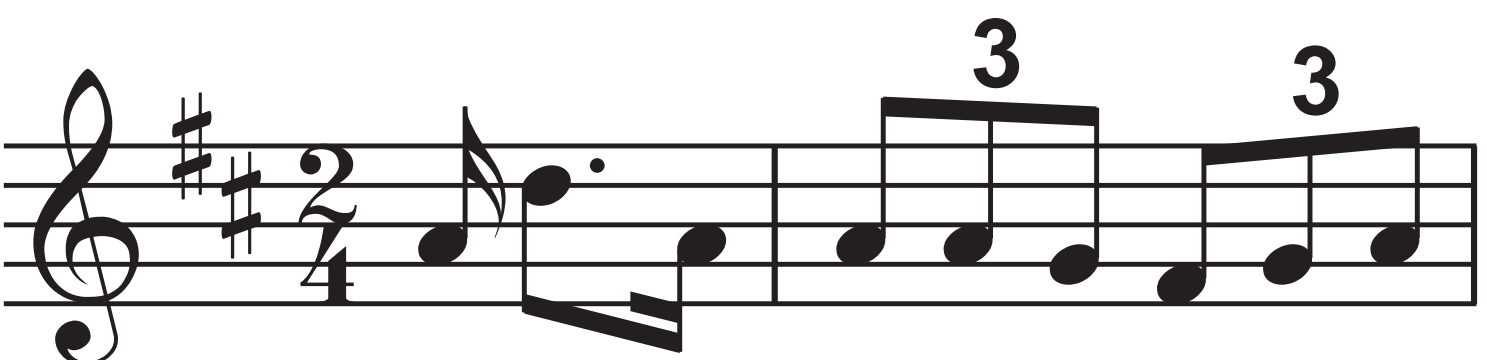
(b) Identify the melody heard at the start of the extract. Put a cross

☐ in the correct box.

(1 mark)

A ☐ 

B ☐ 

C ☐ 

D ☐ 

(continued on the next page)

Turn over

QUESTION 3 continued.

(c) Identify THREE features of the texture at the START of the extract. (3 marks)

1 _____

2 _____

3 _____

(continued on the next page)

Turn over

QUESTION 3 continued.

(d) Describe the music played by the harpsichord at the END of the extract. (2 marks)

(continued on the next page)

QUESTION 3 continued.

- (e) Identify ONE melodic device
heard at the END of the extract.
(1 mark)**

(Total for Question 3 = 8 marks)

Afro Celt Sound System: Release (from the album 'Volume 2: Release')

**4. Listen to the following extract which
will be played THREE times.**

(a) Identify the metre of this extract.

Put a cross ☒ in the correct box. (1 mark)

A ☐ 3/4

B ☐ 4/4

C ☐ 9/8

D ☐ 12/8

(continued on the next page)

Turn over

QUESTION 4 continued.

(b) Describe THREE features of the vocal melody at the START of the extract. (3 marks)

1 _____

2 _____

3 _____

(continued on the next page)

Turn over

QUESTION 4 continued.

- (c) Identify the string instrument associated with folk music which accompanies the voice at the START of the extract.
(1 mark)**
-
-

(continued on the next page)

QUESTION 4 continued.

(d) Describe TWO features of the rhythm which create a sense of excitement in the instrumental section. (2 marks)

1 _____

2 _____

(continued on the next page)

Turn over

QUESTION 4 continued.

**(e) Describe TWO features of the texture that are characteristic of electronic dance music (EDM).
(2 marks)**

1 _____

2 _____

(Total for Question 4 = 9 marks)

**Esperanza Spalding: Samba
Em Preludio (from the album
'Esperanza')**

**5. Listen to the following extract which
will be played THREE times.**

**(a) Describe the melody played by
the acoustic bass guitar at the
START of the extract. (3 marks)**

(continued on the next page)

Turn over

QUESTION 5 continued.

**(b) Name ONE playing technique
used by the acoustic bass guitar
in this extract. (1 mark)**

**(c) Describe the texture in this
extract. (2 marks)**

(continued on the next page)

Turn over

QUESTION 5 continued.

(d) This is a sorrowful love song.

**Explain how Esperanza Spalding
uses harmony, tempo and
rhythm to capture this mood in
this extract. (3 marks)**

harmony_____

(continued on the next page)

QUESTION 5 (d) continued.

tempo _____

rhythm _____

(Total for Question 5 = 9 marks)

Turn over

**S Schwartz: Defying Gravity
(from the album of the cast
recording of Wicked)**

**6. You will hear two extracts, A and B.
You will hear each of them three
times in the following order:
AB, AB, AB.**

**(a) Name ONE woodwind
instrument heard when Glinda
sings 'still be with the
wizard'. (1 mark)**

(continued on the next page)

Turn over

QUESTION 6 continued.

**(b) Name the harmonic device
heard when Glinda sings
'still be with the wizard,
What you've worked and
waited for'. (1 mark)**

(continued on the next page)

QUESTION 6 continued.

- (c) In extract A Glinda sings
‘You can have all you ever
wanted’. Identify the melodic
interval between the syllables
‘ev’ and ‘er’. (1 mark)**

- (d) Describe the dynamics at the
START of extract B. (1 mark)**

(continued on the next page)

Turn over

QUESTION 6 continued.

- (e) Explain how the composer uses harmony at the END of extract B to create a thrilling atmosphere. (2 marks)**

(continued on the next page)

Turn over

QUESTION 6 continued.

- (f) Identify THREE differences between the use of voices in extract A and extract B.**
(3 marks)

Difference 1	
---------------------	--

(Answer spaces continues on next page)

Turn over

Difference 2	
Difference 3	

(Total for Question 6 = 9 marks)

MUSICAL DICTATION

- 7. Listen to the following melody which will be played FOUR times.**

Before the melody you will hear the tonic chord followed by the pulse.

Complete the score in the Source Booklet by writing in the missing:

(a) rhythm (5 marks)

(b) melody (5 marks)

You may use the manuscript on pages 6–8 of the Source Booklet for rough work. However you must write your final answer on the stave on pages 3–5 of the Source Booklet.

(Total for Question 7 = 10 marks)

Turn over

UNFAMILIAR LISTENING

8. Listen to the following extract which will be played FIVE times.

A skeleton score is provided in the Source Booklet.

- (a) Identify the key of this movement. (1 mark)

(continued on the next page)

Turn over

QUESTION 8 continued.

(b) Describe TWO features of the texture of the opening eight bars. (2 marks)

1 _____

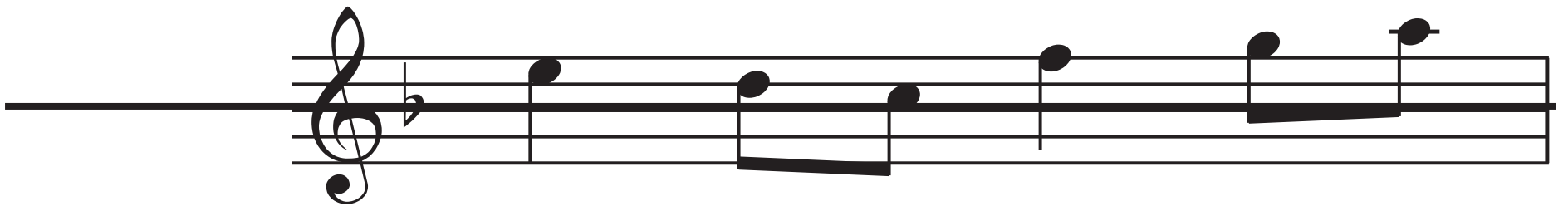
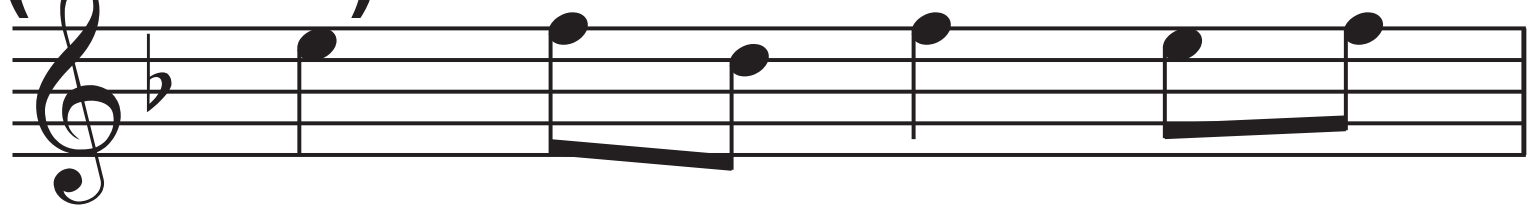
2 _____

(continued on the next page)

QUESTION 8 continued.

(c) The opening eight bars are repeated. Identify ONE way in which the repeat is different.

(1 mark)



(continued on the next page)



Turn over

QUESTION 8 continued.

**(d) Identify the melody in bar 14. Put
a cross ☒ in the correct box.
(1 mark)**

A ☐

B ☐

C ☐

D ☐

(continued on the next page)

Turn over

QUESTION 8 continued.

- (e) Identify the key and cadence at bar 15, beat 3 to bar 16, beat 3.
(2 marks)**

Key	
Cadence	

(continued on the next page)

(f) Name the form of this movement. (1 mark)

(Total for Question 8 = 8 marks)

TOTAL FOR SECTION A = 68 MARKS

SECTION B

Write your answer in the space provided.

You will hear extracts from Area of Study 2: Vocal Music; one familiar and one unfamiliar. In order to answer the question you should refer to the Source Booklet.

The familiar extract, Extract A: Queen: Killer Queen (from the album 'Sheer Heart Attack')

The unfamiliar extract, Extract B: The Crickets: That'll Be The Day

(continued on the next page)

Turn over

SECTION B continued.

You will hear both extracts three times in the following order: familiar unfamiliar, familiar unfamiliar, familiar unfamiliar.

- 9. That'll Be The Day is a rock and roll love song recorded in the 1950s. Killer Queen is a flamboyant glam rock song recorded in the 1970s.**

Evaluate how effectively the bands use PERFORMING FORCES, RHYTHM and STRUCTURE to evoke different emotions in these rock songs.

(continued on the next page)

Turn over

QUESTION 9 continued.

The skeleton scores are provided in the Source Booklet.

You should use your knowledge of musical elements, context and language in your response.

(12 marks)

Answer space continues on the next 9 pages.

Turn over

QUESTION 9 continued.

QUESTION 9 continued.

Turn over

QUESTION 9 continued.

Turn over

QUESTION 9 continued.

Turn over

QUESTION 9 continued.

Turn over

QUESTION 9 continued.

Turn over

QUESTION 9 continued.

Turn over

QUESTION 9 continued.

Turn over

QUESTION 9 continued.

(Total for Question 9 = 12 marks)

TOTAL FOR SECTION B = 12 MARKS

TOTAL FOR PAPER = 80 MARKS

END OF PAPER